

interstuhl

**Xantos**







Second and third generation managing directors: Helmut, Werner and Joachim Link (left to right)

#### Interstuhl

The idea of a Swabian businessman and developer is embarking on an international journey. It's all about attractive and healthy seating, whether we use it to work, think, discuss, argue or relax.

It's all about a chair that actively supports us at what we are doing.

Interstuhl innovations are conceived, tested and developed in an interesting mix of think-tank and expert laboratory. That is what makes us so unique. Simply stated by Werner Link, the company's owner and Managing Director: "We understand more about sitting". An honest statement that has its origins back in 1961 when the assignment was to create relaxing seating for the workers of a textile factory. The focus ever since has been on expertise and

a genuine interest in our products and the people who use them. We remain true to the spirit of our brand by collaborating with leading institutes on the scientific development of our products. This has resulted in a collection that is unparalleled in its breadth and depth. He who understands more about sitting, has studied it in detail. Interstuhl is such a company and will remain so: a world away from corporate affiliations and concerns about globalization. Over 600 employees craft exclusive German goods and they do so in Germany.

Anyone who understands more about sitting should rise up. Rise above the tired old clichés about quality and materials. Interstuhl is what it is, and what it is is very good.

**Xantos.**



X372





X272

Good design keeps its value and is timeless. This is proven by many archetypes, yet finding a new sensible form remains the most difficult hurdle when creating a product. Xantos is honesty, self-conception, high quality. It displays a presence without being ostentatious through its straightforward design and good details. Owners with a grasp of form appreciate this congenial streak. Direct yet dynamic, perfect simplicity, Xantos is reminiscent of the old school of German design. A straight forward thinking person will take a seat, regard the working world with no frills and will only consider what is really important.

It has to be added that Xantos is full of natural balance and strength. A well-fitting suit doesn't make a person – nor does a chair, but it certainly helps one to feel good and presentable, and to convincingly appear in best form.

Xantos. The chair with the striking backrest detail. Xantos is pure and straight forward. Light and transparent in the mesh design. Xantos is available in three back heights.



X142

Swivel chair low,  
aluminium base  
polished opt., width  
and height adjustable  
armrests opt.



X272

Swivel chair medium,  
aluminium base  
polished opt., width  
and height adjustable  
armrests opt.





X372

Swivel armchair high,  
aluminium base polished opt.,  
width and height adjustable  
armrests with leather cover opt.

Xantos is variety. It is available in one or two colours with different coloured backrest and seat upholstery, with leather upholstery or in a mesh design. The impression it leaves can vary from conservative to modern. You can choose from four different base designs.



X132

Swivel chair low,  
black aluminium base,  
width and height adjustable  
armrests opt.



X262

Swivel chair medium,  
aluminium base polished opt.,  
width and height adjustable  
armrests opt., adjustable  
lumbar support opt.



X372

## 12 Office swivel chairs

It doesn't matter what angle you look at Xantos from. It is convincing in its details. Moulded, cast aluminium on the armrests, lower outer backrest and star base define its character.



X262



X262







Xantos as a swivel armchair  
in high-quality leather with  
leather covered armrests.



X362

All offices can be designed consistently with Xantos. Seating comfort from the managing director to visitors. Xantos offers convincing aesthetic and ergonomic arguments in every variation.



X560

Cantilever frame,  
seat and backrest upholstered,  
armrests, stackable







X570

Cantilever frame,  
seat upholstered,  
mesh covered back,  
armrests, stackable





X570





Control lever with self-explanatory, intuitive adjustment



The active seat depth adjustment effectively extends the seat and thus the support area for the thighs

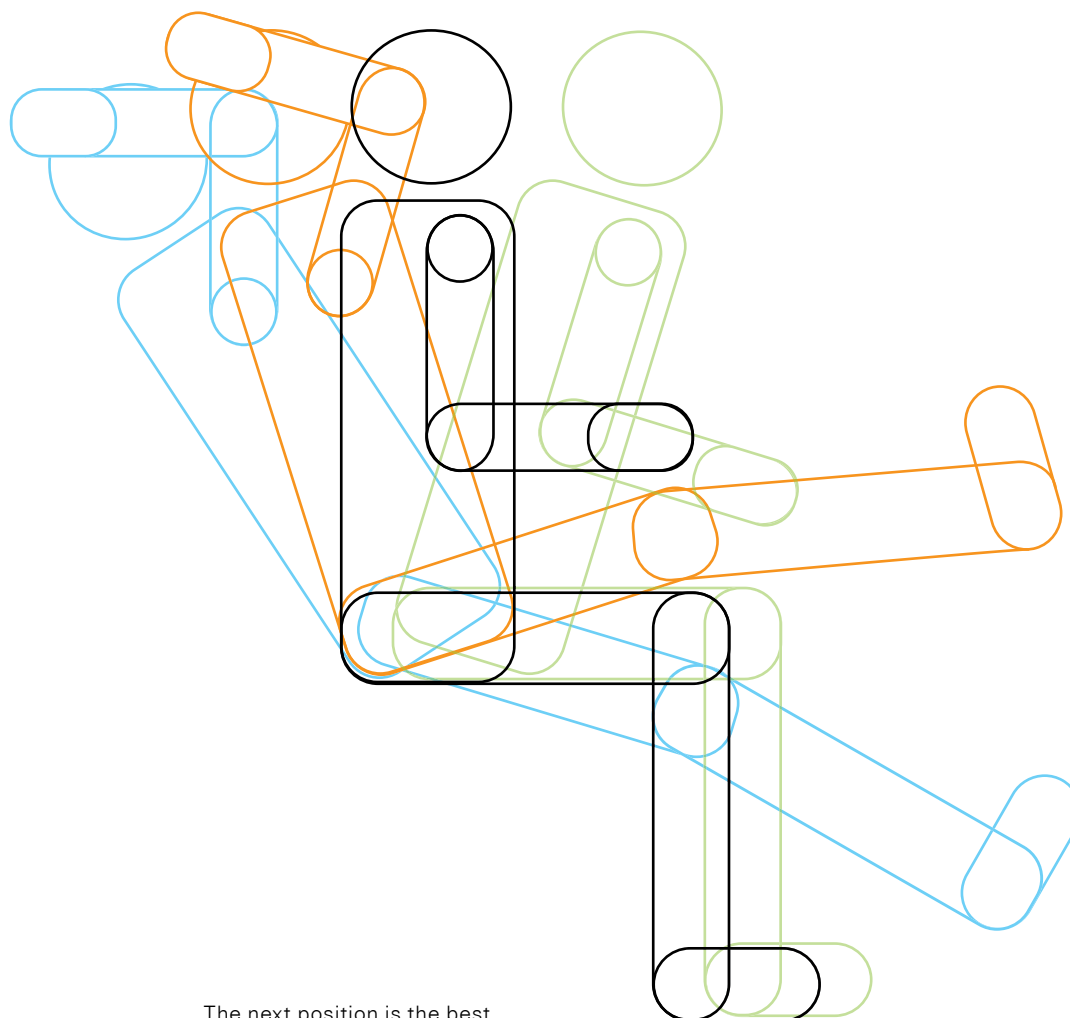




Width and height adjustable armrests



The lumbar support can be moved to the desired height. Air pressure technology allows an individual adjustment of lumbar support.



The next position is the best

#### From the seating specialists

Fact: from an anatomical point of view ergonomics means movement because movement is a critical part of office health. It is a law of nature that effective work processes are one of the most important sources of value-added in the company. Back problems are the greatest causes of absenteeism. A good chair will not heal your back but it is good preven-

tive medicine and eases the pain for those who already suffer. What does an Interstuhl chair do? The patient therapist offers support in each posture. It generates a feeling of well-being in all positions and brings measurable relief.

Naturally, the courage to follow our philosophy of dynamic sitting has meant a break with all the old rules: majestic, immaculate and bolt upright vs. the new

philosophy of doing it with gusto, reclining, lounging, looking out the window, concentrating.

"You can sit however you want. Just sit on the right chair." Each new product development with leading research institutes confirms this and it is substantiated by scientific input. The result: Interstuhl chairs accommodate every posture so ergonomically that maximum support is ensured.

## 1 Synchronous mechanism



The synchronous movement of the seat and backrest provides optimum support for the back in every position; the push effect is eliminated.

## 2 Sprung column



This ensures that the spine, which is very sensitive to vertical jolts, is not subjected to excessive loads when sitting down, even at the lowest seat height.

## 3 Weight adjustment



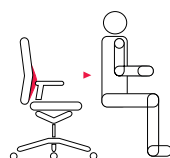
The individually adjustable counter-pressure of the backrest permits correct sitting for both light and heavy users.

## 4 Seat depth adjustment – Aktiv



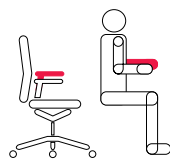
Regulates the distance between the backrest and front edge of the seat without having to change the base of the backrest, thus providing optimum support for the upper thighs; even for taller users.

## 5 Adjustable lumbar support



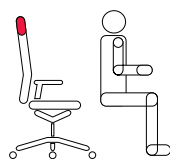
The horizontally adjustable lumbar support adapts to the individual curve of the lumbar spine; this reduces the muscle strain.

## 6 Adjustable armrests



Height adjustment to take the strain off the neck muscles.

## 7 Integrated headrest



Provides valuable relief to the neck and shoulder muscles when reclining.

Office swivel chairs / Swivel armchairs



Backrest in upholstery design . . . . .  
Backrest in mesh design . . . . .

X132  
X142

X262  
X272

Swivel chair low,  
opt. armrests

Swivel chair medium,  
opt. armrests

Backrest height in cm (approx.)

52

60

Plastic colour black

•

•

Metal parts black / brilliant silver / polished / chromed

• / ◦ / ◦ / -

• / ◦ / ◦ / -

Synchronous mechanism

•

•

Weight adjustment

•

•

Sprung column

•

•

Adjustable lumbar support (Air-Pressure)

◦ X132

◦ X262

Seat depth adjustment Astiv

◦

◦

Armrests – height and width adjustable / height and width  
adjustable with leather cover

◦ / ◦

◦ / ◦

Loop armrests with leather cover

◦

◦

Armrests with leather cover

-

-

Double castors hard / soft

• / ◦

• / ◦

Glides

◦

◦

Glides soft

-

-

• Standard   ◦ option   - not available



Visitor chairs



X362  
X372

Swivel chair high,  
opt. armrests,  
integrated headrest



X560  
X570

Cantilever frame,  
armrests, stackable

74	50
•	•
• / ° / ° / -	• / ° / - / °
•	-
•	-
•	-
◦ X362	-
◦	-
◦ / °	-
◦	-
-	◦
• / °	-
◦	-
-	◦



Xantos, Helvetia Patria, St. Gallen, Architects Herzog de Meuron



Xantos comes from the industrial design office .molldesign. Apart from the job of giving every new product its own identity and a touch of invulnerability, .molldesign concentrates on the practical value as well as ergonomic and energy technology for every new design. This ensures its existence and raison d'être in the long term. Lightness and transparency were the driving forces behind the development of Xantos. The aluminium backrest detail and 3D woven mesh lend the family of chairs their value and a significant identity.

Product design: .molldesign  
© interstuhl.

best  
selection office  
design 2003



3 year full warranty,  
5 year long-term  
warranty



Quality produced  
for the environ-  
ment



Ergonomics  
approved



Tested for  
contaminants



Tested  
safety



Goldenes M



BIFMA



Bifma e3  
level platin



Quality  
Office



The  
Blue Angel

Interstuhl  
Büromöbel GmbH & Co. KG  
Brühlstraße 21  
72469 Meßstetten-Tieringen, Germany  
Phone +49-74 36-871-0  
Fax +49-74 36-871-110  
info@interstuhl.de  
www.interstuhl.de

Interstuhl in France  
Téléphone 0800 91 73 49  
Fax +49 7436 871 88 123  
france@interstuhl.com  
www.interstuhl.fr

Interstuhl Limited  
17 Brewhouse Yard  
London  
EC1V 4LA, GB  
Phone +44 20 7250 1850  
Fax +44 20 7250 1890  
assist@interstuhl.com  
www.interstuhl.com

Interstuhl S.L.U.  
c /José del Hierro, 67  
28027 Madrid, Spain  
Phone +34 91 406 18 41  
Fax +34 91 407 31 27  
info@interstuhl.es  
www.interstuhl.es

Interstuhl in Austria  
Pfarrgasse 50  
1230 Wien, Austria  
Phone +43 1 61 64 113  
Fax +43 1 61 64 020  
oesterreich@interstuhl.com  
www.interstuhl.at

Interstuhl in  
Netherlands and Belgium  
Velto B.V.  
Energieweg 21  
2382 NB Zoeterwoude, Netherlands  
Phone +31 71 58 12 400  
Fax +31 71 58 96 907  
info@interstuhl.nl  
www.interstuhl.nl

Interstuhl in Scandinavia  
Pakhus 48  
Sundkaj 11, Frihavnen  
2100 København Ø, Denmark  
Phone +45 32 52 97 40  
Fax +45 32 52 97 42  
scandinavia@interstuhl.com  
www.interstuhl.com

Please find our international partners on [www.interstuhl.com](http://www.interstuhl.com)

Subject to technical changes. Colour deviations possible due to printing methods. 06/13 TN: 1WXA-E

